

## Integrating the Women, Peace, and Security Framework into Gender-Inclusive Disaster Management in Indonesia

Tasya Rahmadhani, Armi Susandi, Heridadi

Defense University, Indonesia

rrtasya10@gmail.com

### Article Info:

**Submitted:**   **Revised:**   **Accepted:**   **Published:**

Sep 4, 2025   Sep 25, 2025   Oct 6, 2025   Oct 11, 2025

### Abstract

This study investigates the integration of the Women, Peace, and Security (WPS) framework into gender-inclusive disaster management in Indonesia. Employing a descriptive qualitative approach grounded in document analysis, it examines academic literature, policy documents, and institutional reports to trace the development, implementation, and impact of WPS principles within Indonesia's disaster governance landscape. The findings reveal a paradigm shift in which women are increasingly recognized not solely as vulnerable populations, but as active leaders and decision-makers in disaster preparedness, response, and recovery efforts. Initiatives such as *Desa Tangguh Bencana* and *Srikandi Tangguh Bencana* exemplify the successful localization of the WPS agenda, fostering inclusive community resilience and addressing gender-specific vulnerabilities. The institutionalization of WPS in Indonesia is further supported by frameworks like the National Action Plan for the Protection and Empowerment of Women and Children in Social Conflicts (RAN P3AKS) and Indonesia's engagement with UN Security Council Resolution 2538, which advocates for women's roles in peacekeeping and disaster risk reduction. These advancements signify a broader transformation in disaster governance, where gender mainstreaming is recognized as a critical component of national resilience and security. The study

concludes that meaningful female participation is essential for building equitable, adaptive, and sustainable disaster management systems in Indonesia.

**Keywords:** Women, Peace, and Security (WPS); Gender; Disaster Management; Resilience; Indonesia

## INTRODUCTION

Indonesia is one of the most disaster-prone countries in the world due to its location on the Pacific Ring of Fire and its position at the convergence of three major tectonic plates (Indo-Australian, Eurasian, and Pacific), which contribute to the high frequency of earthquakes, tsunamis, and volcanic eruptions (Frege et al., 2024). As a tropical archipelagic nation with more than 17,000 islands, Indonesia is highly vulnerable to hydrometeorological disasters such as floods, landslides, and droughts (Rijal et al., 2024). According to the World Risk Report 2024, published by the Institute for International Law of Peace and Armed Conflict (IFHV) and Bündnis Entwicklung Hilft, Indonesia ranks second out of 193 countries in the World Risk Index (WRI) with a score of 41.13. This score reflects a combination of high exposure (39.89) and significant vulnerability (42.40), including limited coping capacity (51.01) and adaptive capacity (46.17). Indonesia is positioned second after the Philippines, which recorded the highest score of 46.91, followed by India in third place with 40.96 (Frege et al., 2024).

This ranking underscores Indonesia's extreme disaster risk, not only in terms of event frequency but also due to systemic constraints in responding and adapting to crises, challenges further exacerbated by rapid urbanization, climate change, and inadequate disaster management infrastructure (Yuniartanti et al., 2025). These conditions demonstrate an urgent need to strengthen national response and adaptation systems, particularly through resilience-based strategies that involve active participation of all communities. Among the critical actors whose roles remain undervalued are women, whose contributions to disaster risk reduction, resilience, and recovery efforts are essential yet often overlooked (Sakir, 2023).

According to law No. 24 of 2007 on Disaster Management in Indonesia formally recognizes women as a vulnerable group prioritized in disaster response efforts. This classification is rooted in the paradigm that women face significantly higher risks during disasters due to perceptions of physical weakness compared to men, as well as restrictive

gender roles shaped by prevailing sociocultural norms (Republic of Indonesia, 2007). Kristina Peterson (1997; (Mulyadi & Yanuarto, 2022)) in *Gender Issues in Disaster Responses* noted that women and children are up to 14 times more likely to die during disasters than adult men, largely due to caregiving roles that compel them to prioritize the safety of their children and other family members over their own. However, labeling women solely as a vulnerable group has reinforced assumptions that they are merely passive recipients of protection rather than active contributors to disaster risk reduction (Ramailis & Sakir, 2024b). Consequently, women have often been excluded from decision-making processes and the implementation of disaster management initiatives, which in turn limits the full utilization of their capacities and strengths (Achmad et al., 2024). This paradigm must shift toward recognizing women as empowered agents of change with significant capacities to contribute meaningfully to disaster preparedness and response. Actively involving women not only strengthens community resilience and preparedness but also enhances the overall effectiveness of disaster response strategies (Ramailis & Sakir, 2024a). Therefore, gender equality and women's empowerment should be prioritized in Indonesia's disaster management policies and practices to ensure their roles are maximized to their fullest potential (Yuwanto, 2023).

Women hold a highly strategic role and make substantial contributions across all phases of disaster management. In the pre-disaster phase, they actively engage in awareness campaigns, community outreach, and environmental sanitation efforts as part of risk mitigation strategies (Sumarni et al., 2020). They are also instrumental in identifying the specific needs of vulnerable groups within their communities, such as children, the elderly, and persons with disabilities, thereby ensuring that mitigation strategies are both effective and well-targeted (Talaththof & Zunariyah, 2021). Furthermore, women often serve as key drivers of collective community awareness on disaster preparedness through women's associations and social organizations they lead. During the emergency response phase, women are actively involved in establishing temporary communal kitchens, organizing logistics, and conducting rapid assessments of victims' needs (Hastuti, 2017). Their contributions extend beyond physical tasks to include coordination and communication between stakeholders, including volunteers, government agencies, and non-governmental organizations (Hafida, 2019). Women's involvement in this phase is critical to ensuring disaster response is timely, well-targeted, and sensitive to gender considerations and the needs of other vulnerable groups. In the post-disaster phase, women play a vital role in

supporting victims' psychological recovery through trauma healing initiatives, which are essential for accelerating social rehabilitation (Susanti, 2022). They also contribute significantly to socio-economic reconstruction, assisting in aid management, facilitating skill-building programs, and restoring disrupted social networks. Women frequently emerge as central figures in re-establishing family and community stability, thereby strengthening long-term societal resilience against future disasters (Ruslanjari et al., 2017).

The participation of women in leadership positions and decision-making processes in disaster management has been shown to enhance the effectiveness and sustainability of disaster risk reduction programs (Ramailis & Sakir, 2024a). Research demonstrates that when women are actively involved in disaster risk governance, policies tend to be more responsive to the needs of all societal groups, leading to more significant reductions in disaster impacts (Ruslanjari et al., 2024). Consequently, strengthening women's capacities and mainstreaming gender considerations at every stage of disaster management are critical components in building inclusive and sustainable national resilience. Women also play a vital role as key agents in strengthening community capacity to cope with disasters by leveraging their local knowledge and extensive social networks (Agustina et al., 2021). Women's traditional knowledge often serves as a crucial resource for identifying early warning signs of disasters and developing adaptation strategies tailored to local conditions (Yumarni & Amaratunga, 2017). Through their broad social networks, women are able to organize communities, disseminate critical information, and effectively mobilize resources, thereby fostering solidarity and improving overall community preparedness (Mulyasari & Shaw, 2013). Actively involving women in disaster preparedness training and decision-making processes has been proven to enhance response effectiveness and reinforce community resilience. Studies indicate that women's active engagement in disaster risk reduction planning and policy implementation results in more inclusive responses that address the needs of all community members, including vulnerable groups such as children and the elderly. Such involvement also contributes to the creation of more sustainable and adaptive policies that are better equipped to address evolving disaster risks in the future (Agustina et al., 2021).

Nevertheless, various barriers continue to hinder the optimization of women's roles in disaster management. Cultural stereotypes that perceive women as less capable physically or technically often restrict their access to training opportunities and leadership positions in disaster response efforts. Furthermore, the lack of training programs specifically designed for women, coupled with limited facilities and resources in disaster-affected areas, remains a

significant challenge (Roy & Mukherjee, 2024). These conditions prevent women from fully contributing to disaster management efforts, despite their considerable potential. Therefore, systematic measures are required to eliminate these barriers through affirmative policies, capacity-building initiatives, and the provision of gender-responsive facilities, enabling women to play a more prominent role in disaster risk reduction. Policy frameworks at both the national and international levels have explicitly recognized the importance of gender mainstreaming in disaster management. In Indonesia, Regulation of the Head of the National Disaster Management Agency (BNPB) No. 13 of 2014 emphasizes the need for active participation of women at every stage of disaster management, ranging from risk mitigation and emergency response to post-disaster recovery (Badan Nasional Penanggulangan Bencana (BNPB), 2014). This policy aligns with the inclusivity principles of the Sendai Framework for Disaster Risk Reduction 2015–2030, a global agenda that promotes non-discriminatory participation, including that of women, in disaster risk reduction initiatives (United Nations Office for Disaster Risk Reduction (UNISDR), 2015). The Sendai Framework underscores that strengthening the capacity and empowerment of all societal groups, without exception, is essential to building sustainable resilience.

Despite the existence of these policies, their implementation in practice continues to face multiple challenges. One of the primary issues is the need to enhance women's capacities through relevant training and broader access to disaster-related information and resources. Many women in disaster-prone areas still face barriers to participating in training programs and accessing critical information that could support their involvement in disaster management. Additionally, structural and cultural obstacles continue to limit women's optimal participation in decision-making processes and disaster management programs. Empowering women not only reduces their vulnerability but also significantly contributes to strengthening national resilience as a whole. Through active participation in risk mitigation, emergency response, and post-disaster recovery, women can introduce more inclusive, responsive, and sustainable approaches to addressing disaster threats. Thus, gender mainstreaming in disaster management policies and practices is a critical step that not only safeguards women but also reinforces national resilience and security overall.

This study aims to analyze the implementation of gender mainstreaming policies in disaster management and to identify the challenges faced by women in participating in mitigation, emergency response, and post-disaster recovery processes. Furthermore, the research seeks to explore the strategic role of women in strengthening national resilience

through capacity building, improved access to disaster-related information, and involvement in decision-making. Accordingly, this study is expected to provide a deeper understanding of the importance of women's empowerment in disaster management policies and practices as a means to develop a more inclusive, responsive, and sustainable disaster management system.

## **METHODS**

### **Research Type**

This study employs a descriptive qualitative research type. The approach is designed to describe and interpret social phenomena based on textual and contextual analysis rather than numerical measurement. The qualitative nature of this research enables an in-depth understanding of the development and implementation of the Women, Peace, and Security (WPS) agenda in Indonesia.

### **Research Design**

The research design applies a document-based research method (desk study), focusing on secondary data derived from academic literature, government policy papers, institutional reports, and official publications related to gender mainstreaming and disaster management within the WPS framework. The design emphasizes systematic identification, organization, and interpretation of documentary sources to trace the evolution of Indonesia's policy commitments to WPS principles.

### **Population and Sample**

The population of this research consists of official documents and publications addressing gender, security, and disaster management issues in Indonesia. The sample includes selected materials that meet three main criteria: (a) relevance to the WPS framework, (b) authenticity and credibility of the source, and (c) significance in explaining Indonesia's policy development and institutional implementation of gender mainstreaming. The sampling technique used is purposive sampling, which allows the selection of documents most relevant to the study objectives.

### **Data Collection Instruments and Techniques**

Data were collected using a document review checklist that guided the identification and extraction of information from various sources. The data collection process involved

four stages: (1) locating and compiling relevant academic and policy documents, (2) evaluating their authenticity and reliability, (3) coding key themes and policy elements, and (4) organizing the data into thematic categories reflecting the WPS dimensions of participation, protection, prevention, and relief and recovery.

### **Data Analysis**

The data analysis was conducted using descriptive qualitative analysis. The analytical process involved reading, coding, and categorizing information to identify patterns, similarities, and differences among the selected documents. Descriptive interpretation was applied to extract factual information and to trace the chronological and thematic progression of Indonesia's WPS commitment. The findings are presented narratively to provide a comprehensive overview of institutional efforts, policy direction, and progress in mainstreaming gender perspectives within national peace and security frameworks.

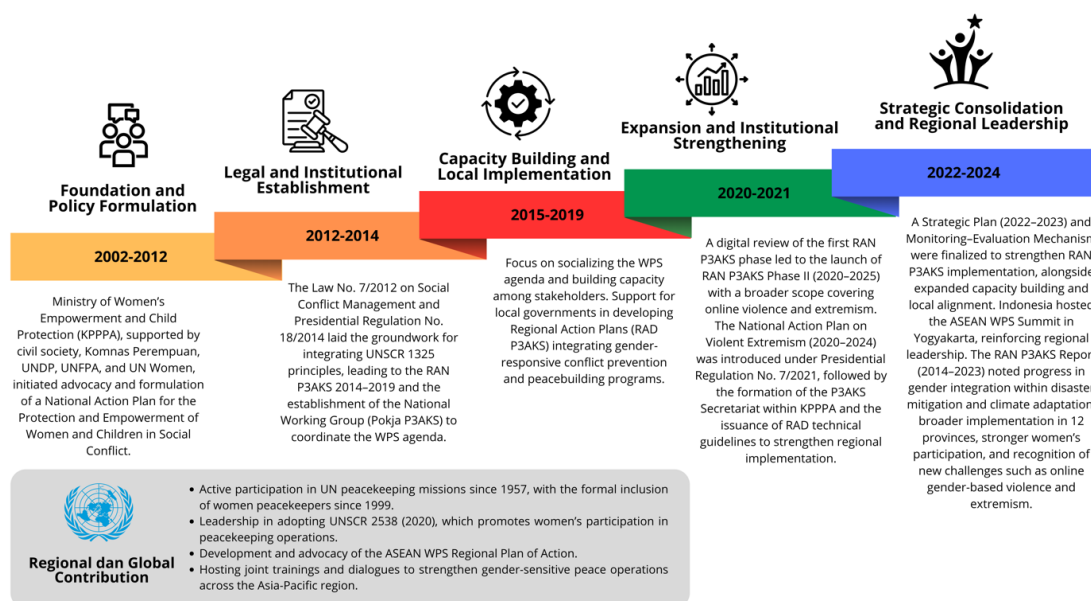
## **RESULTS**

### **Implementation of the WPS Agenda in Indonesia**

The Women, Peace, and Security (WPS) Agenda is an international policy framework introduced through United Nations Security Council Resolution (UNSCR) 1325 in the year 2000 . This resolution highlights four fundamental pillars that serve as the foundation for advancing women's roles in peace and security efforts. The first pillar, prevention, emphasizes the importance of taking proactive measures to prevent conflicts and all forms of violence, while also addressing the root causes of discrimination and gender-based harm against women. This approach recognizes that achieving sustainable peace requires eliminating structural inequalities and ensuring that women are protected from the outset. The second pillar, participation, seeks to strengthen women's involvement and leadership in decision-making processes related to peacebuilding, security, and governance, both at the national and international levels. It underscores the belief that women's perspectives are essential in creating inclusive and lasting peace agreements. The third pillar, protection, focuses on safeguarding women and children from violence during times of conflict, as well as guaranteeing their access to justice, legal remedies, and recovery services when violations occur. Finally, the fourth pillar, relief and recovery, promotes gender-responsive support mechanisms and rehabilitation programs that help women and affected communities rebuild their lives in the aftermath of conflict. Together, these four pillars reflect a comprehensive

framework aimed at ensuring that gender equality and women's empowerment remain central to peace and security agendas worldwide.

The implementation of the Women, Peace, and Security (WPS) agenda in Indonesia has been a gradual strategic process, evolving from civil society advocacy to institutionalized national policy. The journey reflects Indonesia's growing recognition of the crucial role of women in peacebuilding, conflict prevention, and human security. According to the initial phase of Indonesia's commitment to conflict prevention began with the enactment of Law No. 7 of 2012 on the Handling of Social Conflict, which laid the foundation for integrating gender perspectives into national peace and security mechanisms. Between 2002 and 2014, the Ministry of Women's Empowerment and Child Protection (Kementerian Pemberdayaan Perempuan dan Perlindungan Anak/ KPPPA) led the advocacy and formulation of a National Action Plan (RAN) focusing on the protection and empowerment of women and children in social conflict situations. This initiative was strongly supported by civil society organizations, National Commission on Violence Against Women (Komnas Perempuan), and international partners such as UNDP, UNFPA, and UN Women. In 2014, Indonesia officially adapted the principles of UN Security Council Resolution 1325 (UNSCR 1325) on Women, Peace, and Security through Presidential Regulation No. 18 of 2014, which established the National Action Plan for the Protection and Empowerment of Women and Children in Social Conflict (RAN P3AKS) for the period 2014–2019. The same year, Indonesia formed a National Working Group (Pokja P3AKS) to coordinate the plan's implementation across ministries, local governments, and civil society.



**Figure 1.** Milestones of WPS Implementation in Indonesia

During the 2015–2019 period, the government emphasized the socialization of the WPS agenda, capacity-building for stakeholders, and technical assistance to support local governments in developing Regional Action Plans (RAD P3AKS). This stage marked a shift from policy formulation to on-the-ground implementation, with a growing number of provinces integrating gender-responsive approaches into conflict prevention and peacebuilding programs. In 2020, a comprehensive Digital Review was conducted by civil society organizations to evaluate the implementation of the first phase of RAN P3AKS. The review produced key recommendations to expand the scope of the plan to address emerging types of social conflict, including non-traditional security challenges such as online violence, extremism, and community polarization. That same year, Indonesia launched the second phase of RAN P3AKS (2020–2025), reaffirming its long-term commitment to advancing WPS principles. One of the most important initiatives is this contain National Action Plan for the Prevention and Handling of Violent Extremism Leading to Terrorism for the 2020–2024 period. This plan was formalized through Presidential Regulation Number 7 of 2021 under the coordination of the National Counterterrorism Agency. The program incorporates gender and human rights dimensions into efforts to prevent and respond to violent extremism in Indonesia. This integration recognizes that women experience distinct forms of vulnerability in the context of extremism while also acknowledging their essential

contribution to peacebuilding, community resilience, and early detection of radicalization . By embedding gender perspectives into security policies, Indonesia affirms its commitment to creating inclusive and participatory approaches that protect all citizens.

In 2021, the P3AKS Secretariat Team was formally established within KPPPA to strengthen inter-ministerial coordination, followed by the issuance of Technical Guidelines for the Development of Regional Action Plans (RAD). By 2022, the Secretariat completed its Strategic Planning process, resulting in the development of a structured Work Plan for 2022–2023. During this period, the Monitoring and Evaluation Mechanism for RAN P3AKS was also formalized to enhance accountability and track measurable progress. In 2022–2023, capacity-building initiatives and local consultations continued, ensuring that regional governments could effectively align their action plans with national priorities. A major milestone occurred in 2023, when Indonesia hosted the ASEAN Women, Peace, and Security (WPS) Summit in Yogyakarta, reinforcing its leadership role in promoting WPS at the regional level and integrating human security into ASEAN’s peace agenda. By 2024, the P3AKS Working Group launched the Implementation Report for 2014–2023, highlighting significant progress achieved over the decade. The report documented increased participation of women in peace mediation, enhanced protection systems for women and children, and greater institutional coordination at both national and regional levels.

The implementation results of the National Action Plan for the Protection and Empowerment of Women and Children in Social Conflict (RAN P3AKS) in Indonesia demonstrates significant progress in mainstreaming the principles of Women, Peace, and Security . Although the country has not yet adopted a specific WPS agenda within its national policy framework, the implementation of RAN P3AKS under Presidential Regulation No. 18 of 2014 has served as a key instrument in strengthening the protection and empowerment of women and children in conflict situations. Throughout 2024, the implementation activities of RAN P3AKS focused on three main areas, such as prevention, response, and empowerment–participation. These three pillars were adaptively integrated by local governments through the formulation and execution of Regional Action Plans (RAD P3AKS), tailored to the specific social, political, and security contexts of each region. As of 2024, a total of twelve provinces have adopted this policy into their respective RAD P3AKS and have shown notable improvements in women’s active participation in peace processes and public decision-making. These regions reported substantial progress in developing social protection systems for women and children affected by conflict, enhancing access to

recovery services, and strengthening women's leadership capacity at the community level. Conflict prevention programs in several provinces have also incorporated gender perspectives into their planning and implementation, including initiatives such as community-based mediation training, intergroup dialogue forums, and the engagement of women's organizations in conflict resolution processes. These developments highlight a transformative shift in which women are no longer positioned solely as victims, but as key actors in maintaining social peace and security within their communities.

Moreover, the monitoring results of RAN P3AKS implementation reveal that the dynamics of social conflict in Indonesia have become increasingly complex and multidimensional. Conflicts are no longer confined to traditional physical confrontations but have expanded into non-traditional domains such as cybersecurity threats, the spread of hate speech, online gender-based violence (OGBV), and the growing rise of extremism and radicalization involving women as both perpetrators and victims. These emerging challenges have become a major focus of the 2024 P3AKS implementation, emphasizing the need to broaden policy coverage to encompass wider human security issues. This approach aligns with Indonesia's commitment expressed during the ASEAN Women, Peace, and Security (WPS) Summit in 2023, which underscored the importance of integrating gender equality and human security to achieve regional stability. In relation to climate change and increasing disaster risks, the 2024 implementation of RAN P3AKS has also recognized environmental impacts as potential drivers of new conflicts. Several provinces reported rising tensions caused by competition over natural resources, environmental degradation, and limited access to clean water and food. These conditions have direct implications for vulnerable groups, particularly women and children, who often bear disproportionate burdens during crises. Therefore, the 2024 P3AKS initiatives also included the integration of gender perspectives in disaster mitigation strategies, the strengthening of social resilience, and the enhancement of women's capacity to adapt to climate change. Indonesian women play a central role throughout the implementation of RAN P3AKS. They have acted as local leaders, mediators, facilitators, and community mobilizers, contributing to social cohesion and strengthening collective resilience against conflict. Their involvement across local government institutions, civil society organizations, and religious institutions signifies meaningful progress toward building inclusive and gender-equal social structures. The growing participation of women in areas such as security, diplomacy, and conflict management serves as a key indicator that

RAN P3AKS has made a significant contribution to advancing the objectives of the WPS agenda at both national and regional levels.

Indonesia also actively contributes to the implementation of the Women, Peace, and Security (WPS) agenda at both the regional and global levels, particularly through its leadership within ASEAN and its engagement in international peacekeeping missions. This commitment reflects Indonesia's strategic role in advancing gender equality, promoting women's participation in peacebuilding processes, and strengthening collective regional efforts to ensure that the principles of WPS are integrated into broader security and development agendas. These actions show that empowering women in peace and security is not only a matter of social justice but also a crucial strategy for building lasting peace, strengthening governance, and achieving sustainable development. Through institutional reforms, cooperation with regional partners, and diplomatic leadership, Indonesia continues to play an influential role in shaping a gender-responsive approach to peace and security both domestically and internationally.

At the regional level, Indonesia has demonstrated active engagement within the Association of Southeast Asian Nations (ASEAN) in advancing the Women, Peace, and Security agenda. The country contributed to the drafting of the ASEAN Regional Plan of Action on Women, Peace, and Security, which provides a shared policy foundation for member states. During Indonesia's ASEAN Chairmanship in 2023, the government organized the ASEAN WPS Summit attended by all ASEAN countries and Timor-Leste. The summit functioned as a forum for policy dialogue and regional cooperation to support the realization of the Women, Peace, and Security goals. The outcomes of this meeting included several recommendations for ASEAN members to strengthen collaboration in responding to regional security challenges such as cross-border disputes, non-traditional security threats, and transnational crimes. The summit also emphasized the importance of women's participation and leadership in security institutions, peacekeeping activities, and conflict resolution processes. In addition, participants highlighted the need for sustainable resource allocation and institutional capacity building to ensure consistent implementation of the agenda across the region.

At the global level, Indonesia's role reflects a strong dedication to advancing women's involvement in international peace and security. The country ranks among the largest contributors of personnel to United Nations peacekeeping missions and currently

holds the ninth position worldwide. Indonesia has deployed more than eighty-two thousand personnel, including over five thousand women peacekeepers and representing approximately 7% of peacekeepers serving in UN missions with over 570 female peacekeepers deployed since 1999. These figures illustrate Indonesia's progress in integrating gender equality within its defense and security institutions. Increasing the number of women peacekeepers is considered a key element in promoting inclusiveness and effectiveness in peace operations. During its presidency of the United Nations Security Council in August 2020, Indonesia led the adoption of Resolution 2538 concerning women personnel in peacekeeping missions. The resolution was supported by ninety-seven countries and marked a significant milestone in Indonesia's diplomatic history. It calls upon all member states and the United Nations system to enhance collective action to ensure the full and meaningful participation of women in all roles and levels of peace operations. The resolution also highlights the importance of providing women with equal access to training, leadership opportunities, and professional advancement in peacekeeping assignments.

Indonesia's contribution to the advancement of the Women, Peace, and Security (WPS) agenda at the global level is most visibly demonstrated through its long-standing involvement in United Nations peacekeeping missions. Since its first deployment to the United Nations Emergency Force (UNEF) in 1957, Indonesia has remained one of the most active contributors to global peace operations, consistently reaffirming its commitment to maintaining international stability and promoting humanitarian values. The formal inclusion of Indonesian women in peacekeeping roles began in 1999, which marked a transformative milestone in the country's effort to integrate gender perspectives into the security and defense sectors. The presence of female peacekeepers has introduced new dimensions to Indonesia's engagement in peace operations by strengthening the human security approach and emphasizing protection, empathy, and inclusiveness in conflict resolution efforts. According to since 1999, more than 570 Indonesian women from the Indonesian National Armed Forces (TNI) and the National Police (Polri) have participated in peacekeeping assignments under the UN framework. They have served in various conflict-affected regions such as Lebanon (UNIFIL), the Democratic Republic of Congo (MONUSCO), South Sudan (UNMISS), the Central African Republic (MINUSCA), and Mali (MINUSMA). The number of female peacekeepers has tripled from 59 in 2017 to 183 in 2024. As of 2024, about 7% of Indonesian personnel serving in United Nations peacekeeping missions are women. Women make up around 20% of military observers and staff officers among Indonesian

peacekeepers. Their contributions have been particularly vital in facilitating dialogue with local communities, providing essential medical and psychological services, responding to cases of gender-based violence, and building trust between peacekeepers and the populations they serve. These achievements highlight Indonesia's progress in demonstrating that women's participation enhances the overall effectiveness and legitimacy of peacekeeping missions.

Beyond the operational dimension, Indonesia has also shown leadership in promoting women's participation in peacekeeping through international diplomacy. Its tenure as a non-permanent member of the United Nations Security Council (UNSC) from 2019 to 2020 became a turning point in advancing gender inclusion within the global peace and security framework. During this period, Indonesia initiated and successfully led the adoption of United Nations Security Council Resolution (UNSCR) 2538 in 2020. This resolution represents a historic moment as it was the first UNSC resolution spearheaded by Indonesia and specifically focused on strengthening the role of women in peacekeeping operations. UNSCR 2538 emphasizes the need for increasing the number, capacity, and leadership opportunities for female peacekeepers, recognizing that their presence contributes to the credibility and operational success of UN missions. This milestone also reflects Indonesia's strong commitment to the principles of UNSCR 1325 (2000), which calls for the inclusion of women in all aspects of peace processes, from prevention and conflict resolution to reconstruction and recovery. The implementation of these commitments involves close coordination among key national institutions, particularly the Ministry of Foreign Affairs, the Ministry of Women's Empowerment and Child Protection (KemenPPPA), the Coordinating Ministry for Human Development and Cultural Affairs (Kemenko PMK), and the Indonesian Peacekeeping Mission Center (PMPP TNI). Together, these institutions work to develop gender-responsive operational frameworks, improve training systems, and ensure that women peacekeepers are equipped with both technical and leadership skills before deployment.

### **Women's Participation in Indonesian Disaster Management**

Disasters in Indonesia are recognized as multidimensional national threats that not only endanger human life and property but also undermine economic stability, social welfare, and national security. According to Law No. 24 of 2007 on Disaster Management, a disaster is defined as an event or series of events that threaten and disrupt the lives and livelihoods

of people, caused by natural, non-natural, or human factors, resulting in casualties, environmental damage, property loss, and psychological impacts . This definition reflects the comprehensive nature of disaster risks in Indonesia, encompassing geological phenomena such as earthquakes and volcanic eruptions, hydrometeorological hazards such as floods and droughts, as well as non-natural threats including epidemics, technological failures, and social conflicts. In this context, disasters are not merely viewed as natural occurrences but as complex events influenced by environmental, social, and governance factors that demand a systematic management approach to reduce their impact and safeguard national resilience. Disaster management refers to a series of planned, coordinated, and continuous efforts undertaken before, during, and after a disaster to prevent, mitigate, prepare for, respond to, and recover from disaster impacts. The purpose of disaster management is to protect communities from potential hazards, integrate disaster risk reduction into national and regional development, ensure the fulfillment of citizens' rights during emergencies, and restore social, economic, and environmental functions after a crisis . The law establishes that disaster management is the shared responsibility of the government, local authorities, the private sector, and the community, and must be based on the principles of humanity, equity, participation, and non-discrimination. To implement these mandates, the National Disaster Management Agency (BNPB) and Regional Disaster Management Agencies (BPBD) were formed as institutional mechanisms to coordinate, plan, and execute disaster management activities across all administrative levels.

The disaster management framework in Indonesia is further detailed in Government Regulation No. 21 of 2008, which classifies the disaster management process into three phases: pre-disaster (mitigation, preparedness, and risk reduction), emergency response, and post-disaster recovery. This regulation emphasizes a transition from reactive to preventive disaster management, underscoring the importance of early warning systems, spatial planning, and community resilience. Building upon thid regulations, Indonesia has adopted the Sendai Framework for Disaster Risk Reduction 2015–2030 as a guiding principle in formulating Presidential Regulation No. 87 of 2020 concerning the Master Plan for Disaster Management 2020–2044 (Rencana Induk Penanggulangan Bencana or RIPB). The RIPB Implementation Roadmap is structured in five-year achievement stages and adopts the four priorities of the Sendai Framework: enhancing disaster risk assessment, improving institutional synergy and governance resilience in disaster risk management, strengthening investments in disaster risk management, and increasing readiness for effective response.

These regulations and frameworks represent Indonesia's proactive efforts to reduce future disaster risks, although their successful implementation requires continuous monitoring and collaborative oversight.

Within this national system, disaster management in Indonesia adopts a cyclical and adaptive model consisting of four interrelated stages (mitigation, preparedness, response, and recovery) which form a continuous process aimed at reducing vulnerability and strengthening community resilience. The National Disaster Management Plan (Renas PB) 2020–2024 operationalizes this framework by emphasizing multi-sectoral coordination, risk-based planning, and inclusive participation. Gender inclusion has become one of its key pillars, recognizing that women's roles in disaster management go beyond being victims of disaster impacts. Women are vital actors in prevention, preparedness, and recovery efforts, as reflected in the BNPB Regulation No. 13 of 2014 on Gender Mainstreaming in Disaster Management, which requires that all disaster management programs and budgets integrate gender perspectives to ensure equality, justice, and effectiveness.

A progress in integrating gender perspectives into Indonesia's disaster management system was made through the adoption of the BNPB Gender Mainstreaming Commitment Document by the National Disaster Management Agency (BNPB) and regional disaster management agency (BPBD) in 2023. This commitment was formalized during the "Advocacy for Gender Mainstreaming in Disaster Management" event that held as part of the 2023 National Disaster Risk Reduction (DRR) Month and supported by the SIAP SIAGA program. The document outlines three core commitments. First, BNPB's readiness to champion the implementation of gender mainstreaming within the agency. Second, its commitment to incorporate gender perspectives into all programs across its work units. Third, its dedication to systematically monitor and evaluate the integration of gender considerations in disaster management. This commitment represents a paradigmatic shift in disaster governance, from a gender-neutral framework toward a gender-responsive approach acknowledging that gender equality is both a legal and strategic imperative for effective disaster risk reduction and resilience.

This shift aligns closely with the Women, Peace, and Security (WPS) agenda, which emphasizes the importance of women's meaningful participation in peacebuilding and security processes, including disaster risk management. By embedding gender mainstreaming into institutional structures, operational mechanisms, and program evaluations, BNPB and

BPBD have taken substantial steps to ensure that disaster management is inclusive and responsive to the needs of all groups, particularly women and children who are often disproportionately affected by crises. This study indicates that the empowerment of women and youth in disaster management in Indonesia has shown significant progress, reflecting a shift in disaster governance and alignment with the Women, Peace, and Security (WPS) agenda. Women are increasingly recognized not only as a vulnerable group but as active agents in disaster preparedness, response, and recovery. This paradigm shift is embodied in a comprehensive approach where women actively contribute at every stage of disaster management, including pre-disaster (mitigation and preparedness emergency response, and post-disaster recovery).

In the pre-disaster phase, women play a crucial role in identifying potential risks and vulnerabilities in their environments. Women who possess both individual skills and access to institutional support tend to demonstrate significantly greater resilience at personal, community, and national levels. These capacities enable women to better identify environmental risks, adapt to evolving conditions, design effective preparedness strategies, make informed decisions, and apply protective measures. Furthermore, they enhance the ability to lead swift recovery efforts after a disaster. Building capacities is essential not only for strengthening community resilience but also for reinforcing comprehensive national disaster management systems. Within Indonesia's social and cultural fabric, women in both rural and urban settings frequently participate in formal and informal organizations. These include social and religious gatherings, such as *pengajian ibu-ibu* (woman religious study groups), *arisan* (rotating savings groups), *PKK/Pemberdayaan Kesejahteraan Keluarga* (Family Welfare Empowerment) and *Darma Wanita* (Association of Civil Servants' Wives). These groups serve as important forms of social capital providing effective platforms for sharing disaster-related knowledge, skills, and information. As such, these networks become strategic channels for implementing disaster risk reduction initiatives.

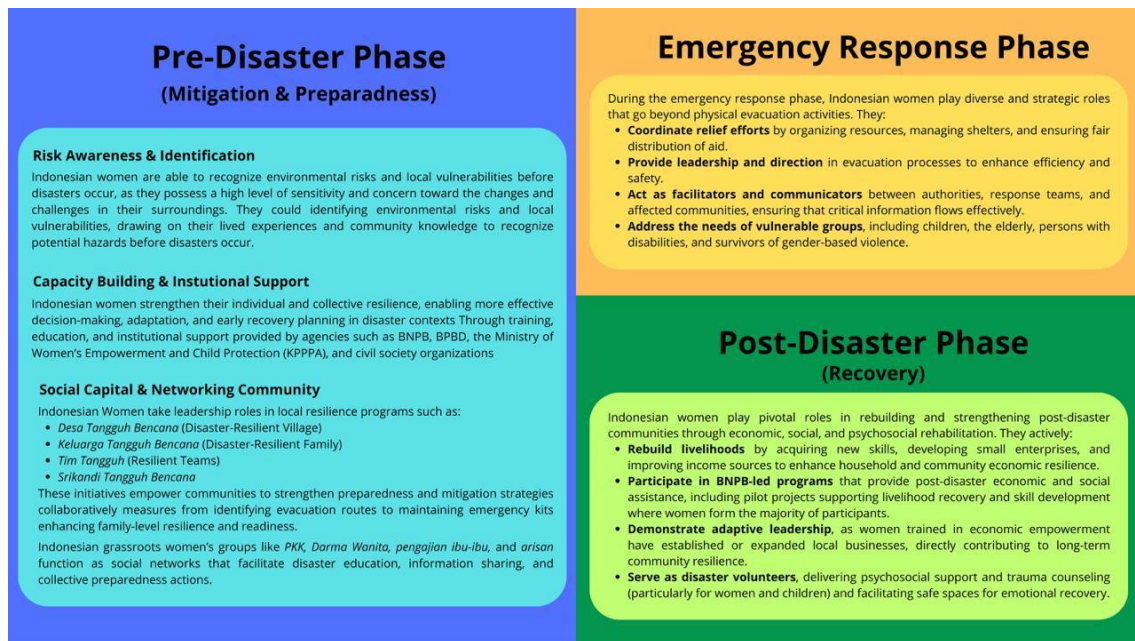


Figure 2. Woman Participation in Indonesia's Disaster Management

## Women's Potential and Capacity in Disaster Management

The potential of women in disaster management is deeply embedded in their distinctive psychological traits and socially constructed roles. In daily life, women perform diverse and multifaceted social roles that are deeply embedded within family, community, and institutional structures. Traditionally, they assume the primary responsibility for caregiving within the household. This responsibility includes child-rearing, managing domestic resources, providing healthcare, facilitating education, maintaining family welfare, and ensuring emotional well-being. These sustained responsibilities require a range of skills such as risk assessment, prioritization, resource coordination, effective communication, critical thinking, problem-solving, and the provision of emotional support. Over time, these capabilities develop into forms of practical knowledge and adaptive capacity. These competencies are directly relevant to be implemented in disaster management as they enable women to assess potential risks, mobilize available resources, organize community preparedness, and support recovery processes.

Psychological and sociological theories provide a comprehensive understanding of women's distinctive characteristics and their potential contributions to disaster management. A psychological perspective emphasizes that Emotional Intelligence theory identifies women as generally exhibiting higher levels of empathy, emotional awareness, and relationship

management compared to men. Emotional Intelligence, as defined by Salovey and expanded upon by Sluyter, refers to the capacity to effectively recognize, understand, manage, and apply emotions in both oneself and others. These capabilities enable women to effectively discern the emotional and psychological needs of individuals and communities, particularly in times of crisis. Enhanced empathy allows women to detect distress, respond with sensitivity, and coordinate support mechanisms, all of which are vital in disaster preparedness, response, and recovery stages. Relationship management skills further empower women to foster communication, establish trust, and promote cooperation among diverse actors, thereby ensuring disaster management efforts are both inclusive and responsive to human needs.

Women's psychological growth is fundamentally shaped by their relationships and sense of connectedness and this concept further explained by Relational-Cultural Theory which offers valuable insight into the role of interpersonal bonds in shaping resilience and development. Grounded in feminist psychological thought, this theory asserts that resilience and growth emerge through mutual empathy, respect, and collaborative engagement. Women's relational orientation predisposes them to value inclusive decision-making and collective problem-solving. In disaster management these characteristics strengths enable women to act as mediators, facilitators, and community connectors, fostering networks that enhance knowledge sharing, resource mobilization, and cooperative recovery. These processes, in turn, strengthen social cohesion and collective resilience. Moreover, research on Risk Perception and Behavioral Response demonstrates that women frequently perceive risks with greater acuity and tend to adopt more cautious and preventive approaches than men. Cognitive and social psychological theories suggest that such gender differences in risk perception are shaped by socialization, lived experience, and differing cognitive styles. Women's heightened awareness of environmental and social risks motivates proactive engagement in preparedness measures, including advocacy for early warning systems, disaster awareness programs, and preventative action at household and community levels. Such cautious approaches not only address immediate threats but also strengthen longer-term resilience.

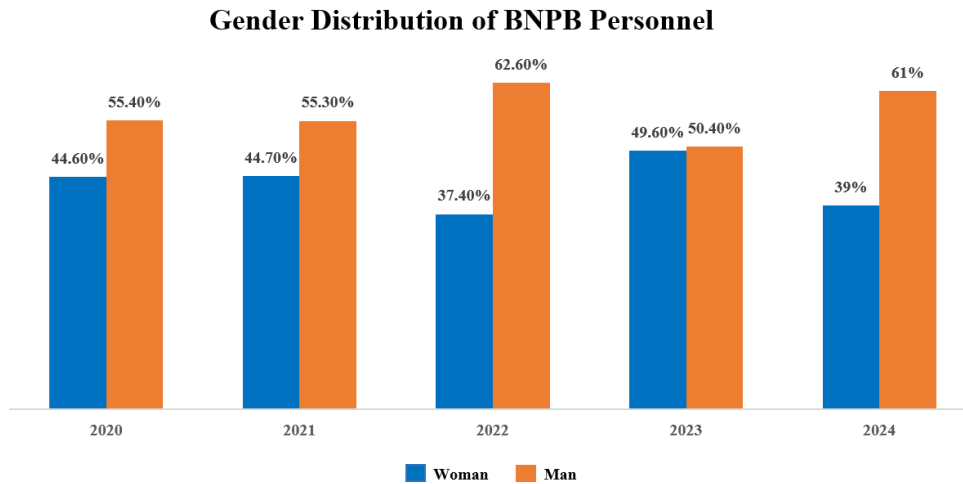
A sociological perspective highlights that women occupy essential roles in sustaining and reinforcing social structures, particularly within family and community contexts. They are often entrusted with responsibilities such as child-rearing, elder care, household management, and resource coordination. These roles cultivate critical organizational, interpersonal, and adaptive skills that are directly applicable to disaster governance. Beyond

their functional importance, these responsibilities contribute to the resilience of communities by fostering cooperation, communication, and problem-solving capabilities essential during crises. The concept of social capital offers a valuable framework for understanding the role of women in disaster preparedness and response. As defined by, social capital encompasses the networks, norms, and trust that facilitate collective action and cooperation for mutual benefit. Women's active participation in formal and informal social networks, such as empowerment groups, religious communities, self-help organizations, and family welfare associations that constitutes a vital form of social capital. These networks function as platforms for the exchange of knowledge, capacity building, and coordinated action, thereby enhancing disaster risk reduction efforts. Feminist Sociology also elucidates that women's contributions extend beyond their functional roles, framing them as transformative actors within social systems. This theoretical approach highlights that women's engagement in everyday social life challenges traditional power dynamics, fosters inclusivity, and promotes equitable governance structures. In disaster management contexts, women's participation in community networks creates spaces for mutual support, empowerment, and the development of collective strategies that strengthen social cohesion and preparedness.

It is also emphasized by Symbolic Interactionism that shared meanings, values, and norms are constructed through interactions within women's social networks. In disaster contexts, these processes of meaning-making are employed to improve the interpretation of risks, enable coordinated community responses, and sustain resilience over time. The relational roles held by women are thus considered essential for cultivating a preparedness culture that reflects the specific needs and realities of local communities. Furthermore, it is also highlighted that women occupy strategic positions within social networks. Often positioned as connectors or brokers, women facilitate the flow of information, mobilize resources, and link diverse groups during emergencies. Such positioning is regarded as crucial for empowering women to lead community-based resilience initiatives, coordinate disaster risk reduction strategies, and strengthen collective adaptive capacity at both community and institutional levels.

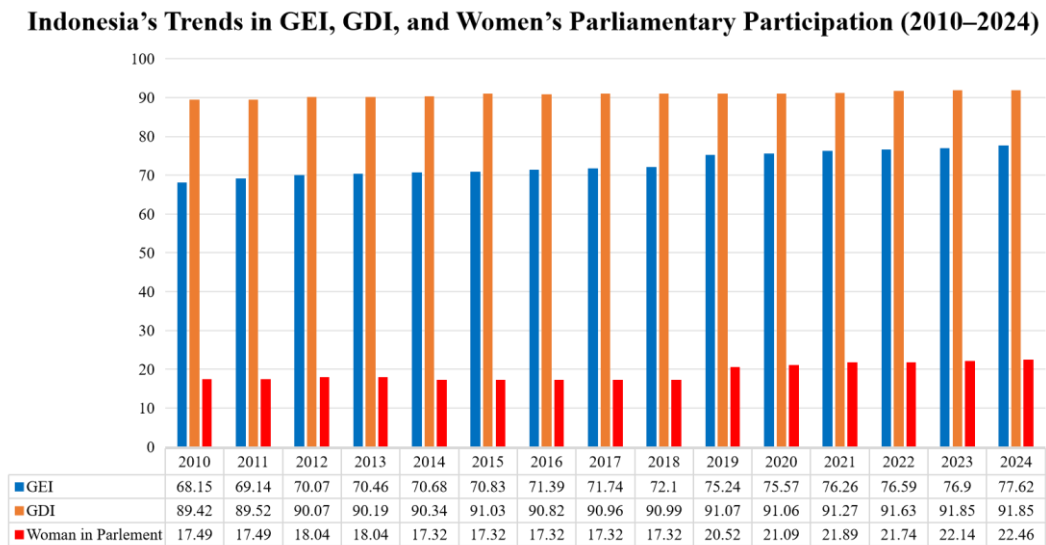
Resilience in disaster management is significantly enhanced by the meaningful involvement of women. Studies by have shown that disaster resilience can increase when women actively participate in disaster preparedness, response, and recovery processes. Women bring unique perspectives to disaster management through their roles as caregivers, community leaders, and innovators, enabling faster recovery and greater adaptability. Despite

this recognized potential, empirical data indicate that women’s participation in disaster management and decision-making processes in Indonesia remains suboptimal and unequal compared to men.



**Figure 3.** Gender Distribution of BNPB Personnel in 2020-2024

According to data from the National Agency for Disaster Management (BNPB) between 2020 and 2024 reveal persistent gender imbalance in disaster management personnel, with female participation fluctuating and consistently trailing male representation. Female representation began at 44.6% in 2020, rose slightly by 0.1 percentage point to 44.7% in 2021, then declined sharply by 7.3 points to 37.4% in 2022. In 2023, it increased significantly by 12.2 points to 49.6%, before falling again by 10.6 points to 39% in 2024. Male representation consistently outweighed female participation, rising from 55.4% in 2020 to 61% in 2024. These fluctuations demonstrate a lack of sustained gender mainstreaming within disaster management institutions. The fact that female participation ultimately rests at only 39% underscores the need for structural reforms to ensure consistent involvement of women. Gender-balanced representation is not merely a matter of equity but a strategic necessity for embedding gender perspectives into disaster preparedness, response, and recovery, in line with the Women, Peace, and Security (WPS) agenda.



**Figure 4.** Indonesia's Trends in GEI, GDI, and Women's Parliamentary Participation

Data from the Indonesian Central Statistics Agency (Badan Pusat Statistik/BPS) show that women's representation in the national parliament has gradually increased from 17.49% in 2010 to 22.46% in 2024 which means gain of nearly 5 percentage points over fourteen years. Despite this progress, women still occupy less than one-quarter of legislative seats which reflects persistent gender inequality in political participation. This gap is critical because parliamentarians play a central role in determining national policies, budgets, and priorities, including those related to disaster management and gender mainstreaming . Greater female representation in parliament strengthens the integration of gender perspectives into national decision-making, ensuring that policies address issues such as inclusive disaster preparedness, climate resilience, social protection, and prevention of gender-based violence. These priorities are aligned with the Women, Peace, and Security (WPS) agenda and are essential for strengthening national resilience and security. The current level of representation, however, shows that there remains substantial room for improvement to fully harness the potential of women's leadership in shaping a gender-responsive disaster management system.

This study also finds that gender development provide additional context to the patterns of women's participation in Indonesia from Gender Empowerment Index (GEI) and Gender Development Index (GDI). The Gender Empowerment Index (GEI) measures the capacity of women and men to participate in political, economic, and social decision-making. It reflects the extent to which women can influence and access leadership positions,

control resources, and participate equally in societal decisions . From 2010 to 2024, Indonesia's GEI rose from 68.15 to 77.62, an increase of 9.47 points, indicating gradual improvement in women's empowerment. This empowerment could strengthen disaster resilience because women who hold leadership roles and have decision-making power are more likely to ensure that disaster preparedness, response, and recovery efforts are inclusive, context-sensitive, and address the specific needs of vulnerable populations . The Gender Development Index (GDI) on the other hand, measures equality between women and men in terms of health, education, and income . It reflects the broader level of gender equality in human development outcomes. Indonesia's GDI increased from 89.42 in 2010 to 91.85 in 2024, a gain of 2.43 points, showing a positive trend in improving access and quality of basic capabilities for both genders. This improvement supports disaster resilience by ensuring that both women and men have the necessary health, knowledge, and economic capacity to prepare for, respond to, and recover from disasters effectively. A higher GDI implies stronger social foundations, enabling communities to withstand shocks and recover more rapidly.

Women are essential to societal resilience, peace, and sustainable development because they bring unique perspectives, skills, and capacities that strengthen communities. Their involvement is not only a matter of equality but also a strategic necessity. Women often play central roles as caregivers, community organizers, and decision-makers, which enables them to contribute directly to disaster preparedness, response, and recovery. They can identify vulnerabilities that others might overlook, mobilize community networks, and foster inclusive solutions that benefit everyone. In governance and security, women's participation ensures that policies address diverse needs, including those of marginalized groups. This is why the Women, Peace, and Security (WPS) agenda emphasizes women's full and meaningful participation as a cornerstone for building lasting peace, enhancing resilience, and strengthening national stability.

This paradigm shift is also embodied in the proactive role of women in the pre-disaster phase, particularly through their engagement in community-based resilience programs that strengthen preparedness, mitigation, and risk reduction capacities. Women not only participate in but often lead initiatives such as *Desa Tangguh Bencana* (Disaster Resilient Village) and *Keluarga Tangguh Bencana* (Disaster Resilient Family), which empower communities to develop strategies to withstand and recover from disasters more effectively. These programs reflect the core principles of the Women, Peace, and Security (WPS) agenda

that emphasizing meaningful female participation in decision-making processes as a foundation for sustainable peace and national resilience. The establishment of Tim Tangguh (Resilient Teams) also illustrates represent a community-based resilience initiative implemented through a combination of government programs, civil society engagement, and multi-stakeholder collaboration. Government initiatives led by the Ministry of Women's Empowerment and Child Protection (KPPPA) and the National Disaster Management Agency (BNPB) have supported the development of over 1,200 resilient villages and urban wards across Indonesia. Civil society organizations complement these efforts through sustainable resilience models, women's leadership programs, and youth engagement initiatives. At the regional level, gender perspectives have been integrated into Regional Action Plans, fostering early warning systems and protection mechanisms for women and children.

BNPB also have a Srikandi Tangguh Bencana community that have sought to enhance women's capacity in disaster mitigation and response. Srikandi Tangguh Bencana program is enhancing family preparedness as a critical component of community resilience. The program emphasizes thirteen essential preparedness measures that families should know and apply. These include recognizing potential disaster threats, understanding how to protect themselves, identifying safe areas within the home, avoiding unsafe zones, knowing evacuation routes, identifying assembly points outside the home, preparing standard emergency kits, recording contact numbers of all family members, keeping important emergency contact numbers, practicing preparedness plans, and addressing any deficiencies based on situational conditions. By empowering women with these competencies, the program not only strengthens household-level disaster readiness but also reinforces women's leadership roles in disaster risk reduction. This approach aligns with the Women, Peace, and Security (WPS) agenda by recognizing women as central actors in safeguarding their communities, thereby enhancing both social resilience and national security.

Another examples from Central Sulawesi and Aceh that also demonstrate the crucial role of women's networks play as frontline actors in disaster preparedness and violence prevention. In Central Sulawesi, particularly in areas such as Palu, Donggala, and Sigi, women have actively engaged in preparedness through initiatives such as Women Friendly Spaces (WFS). These safe spaces serve not only as gathering points for emotional and psychosocial support but also as platforms for women to share disaster-related knowledge, coordinate community responses, and strengthen resilience. Through these networks, women

contribute to both disaster mitigation and violence prevention, providing critical support to vulnerable groups, especially women and children. Organizations such as YAPPIKA-ActionAid that have supported these initiatives by establishing WFS in disaster-affected areas to ensuring that gender-specific needs are addressed during and after emergencies. In Aceh, following the 2004 tsunami, women played central roles in community recovery and rebuilding. Beyond participating in physical reconstruction, they engaged in social recovery and violence prevention. For example, initiatives led by survivors, such as the establishment of community cafés in Lhoknga, provided not only employment opportunities for women but also safe communal spaces for education, dialogue, and disaster preparedness training. These activities demonstrate how women's leadership can transform recovery processes into opportunities for strengthening community resilience while embedding gender-sensitive approaches into disaster management.

In the emergency response phase, women assume diverse and strategic roles that extend beyond direct physical participation in evacuation activities. Although their presence in physically conducting evacuations may not always be prominent, women usually contribute in complementary and essential capacities. They play critical roles in organizing relief resources, managing emergency shelters, and ensuring equitable distribution of aid. Women also take leadership positions, providing direction and coordination during evacuation processes to ensure efficiency and safety. Others serve as moderators and facilitators bridging communication between authorities, disaster response teams, and affected communities. These roles include disseminating critical information, mediating conflicts, and addressing the specific needs of vulnerable groups such as children, the elderly, persons with disabilities, and survivors of gender-based violence. Such involvement reflects women's ability to combine practical action with leadership and coordination skills, thereby enhancing the overall quality and inclusivity of emergency response operations.

In the recovery phase, women contribute significantly to rebuilding and strengthening post-disaster communities through multifaceted roles that encompass economic, social, and psychosocial rehabilitation. They engage in activities such as acquiring new skills, developing livelihoods, and improving existing sources of income, thereby enhancing both household and community economic resilience. The National Disaster Management Agency (BNPB) has implemented programs during emergency and post-disaster phases that include economic and social assistance for affected communities. This pilot projects have provided direct support and skill-building opportunities to develop new

sources of livelihood in several regions. A notable outcome is that the majority of program participants are women, who demonstrate strong determination and adaptive capacity in rebuilding their lives. BNPB reveal that women who receive economic empowerment training actively develop new businesses or enhance existing livelihoods, thereby increasing community resilience to future disasters. Beyond economic initiatives, women also play important roles as disaster volunteers, providing essential support services such as psychosocial assistance to affected survivors with particular attention to women and children who are often among the most vulnerable. This includes offering emotional support, facilitating trauma counseling sessions, and fostering safe spaces for recovery. Additionally, women actively participate in restoring social cohesion by reestablishing community networks and support systems to ensuring that recovery efforts address both material and social needs. Their involvement in these processes helps ensure that reconstruction is inclusive, gender-responsive, and grounded in strengthening the social, economic, and institutional fabric of affected communities, in alignment with the principles of the Women, Peace, and Security agenda.

## **DISCUSSION**

The findings of this study demonstrate that Indonesia's implementation of national resilience is strongly supported by the integration of gender perspectives within disaster management policies and practices. Women's participation across all phases of disaster management pre-disaster, emergency response, and recovery plays a critical role in enhancing preparedness, accelerating recovery, and ensuring sustainability in post-disaster reconstruction. These results are consistent with the study's objective of analyzing the relationship between the Women, Peace, and Security (WPS) agenda and Indonesia's resilience framework. Women's local knowledge, extensive social networks, and caregiving roles serve as unique adaptive capacities that contribute to more effective early warning, risk assessment, and community-based disaster governance. Thus, gender inclusivity functions not merely as a matter of social equity but as a key operational mechanism for achieving national resilience, strengthening human security, and supporting sustainable development.

The findings correspond with earlier research highlighting the strategic role of women in disaster resilience. Mulyasari and Shaw (2013b) emphasize that women's engagement in risk communication enhances community preparedness and adaptive

capacity, which aligns with this study's observations on community-based early warning and mitigation. Similarly, Drolet et al. (2015) found that women's participation during preparedness and recovery phases increases collective resilience and expedites recovery, consistent with this study's findings on women's leadership in post-disaster economic recovery. Kusumasari (2015) also argues that women's involvement in disaster response fosters social cohesion and coordination, echoing the present study's evidence. However, this study extends prior literature by identifying institutional mechanisms such as BNPB's gender mainstreaming policy and the Srikandi Tangguh Bencana program through which women's empowerment is systematically integrated into Indonesia's disaster governance. Unlike earlier works that focused primarily on community-level initiatives, this research situates women's roles within a broader policy and institutional continuum, connecting grassroots participation with national resilience systems.

Theoretically, this study contributes to advancing the understanding of gendered resilience within the WPS framework, confirming that gender inclusivity enhances national adaptive capacity. It validates WPS as a practical model for strengthening disaster governance and national resilience. Practically, the results demonstrate that empowering women through leadership programs, training, and institutional involvement yields measurable improvements in community resilience and social stability. These findings have direct policy implications, particularly in embedding gender-sensitive performance indicators within Indonesia's national and regional disaster management plans (Renas PB 2020–2024). Furthermore, the study reinforces the perspective that resilience should not be viewed solely in structural or infrastructural terms but also through social and gender dimensions, where women act as proactive agents of change rather than passive beneficiaries. This recognition supports Indonesia's leadership in ASEAN in promoting gender-responsive approaches to peace and security.

Despite the robustness of document-based data and the triangulation with secondary sources, several limitations must be acknowledged. First, the reliance on secondary data may limit empirical depth regarding real-world implementation. Second, access to official monitoring reports and gender-disaggregated institutional data especially at subnational levels remains restricted, potentially affecting data completeness. Third, the descriptive qualitative approach limits the capacity to quantitatively assess causal relationships between women's participation and resilience outcomes. Lastly, the temporal scope focuses on the 2014–2025 policy period, which may not capture long-term policy impacts. Future research

should employ mixed-method or participatory field-based approaches to strengthen empirical validation and provide a longitudinal assessment of gender mainstreaming impacts across multiple policy cycles.

## CONCLUSION

This study examined the implementation of the Women, Peace, and Security (WPS) agenda in Indonesia, with a particular focus on women's participation in disaster management as a foundation for strengthening national resilience. The findings reveal that integrating gender perspectives into disaster governance enhances Indonesia's capacity to anticipate, respond to, and recover from crises. Women's participation rooted in their community networks, caregiving roles, and adaptive capacities proves essential in improving preparedness, accelerating recovery, and ensuring the sustainability of reconstruction processes. Through institutional mechanisms such as BNPB's gender mainstreaming policies, the Srikandi Tangguh Bencana program, and the adoption of Regional Action Plans (RAD P3AKS), Indonesia has successfully positioned women as agents of change within national resilience systems. These outcomes reaffirm the practical relevance of the WPS framework as an operational model for inclusive and sustainable disaster management, linking gender equality with human security and national stability.

Despite these positive developments, several limitations must be acknowledged. The study relied primarily on secondary and document-based data, which limited the ability to capture field-level variations in the implementation of gender mainstreaming across regions. Additionally, access to disaggregated quantitative data and official monitoring reports was restricted, constraining deeper statistical analysis. The qualitative-descriptive approach also did not permit causal testing between women's participation and resilience outcomes, which could be explored in future studies. Extending the temporal scope beyond the 2014–2025 policy cycle would allow for more longitudinal assessments of progress and challenges.

Future research should adopt mixed-method approaches combining qualitative insights with quantitative performance indicators to evaluate the measurable impacts of gender mainstreaming on resilience outcomes. Comparative studies across ASEAN countries could also reveal best practices and regional learning mechanisms that strengthen women's leadership in disaster governance. Further exploration of digital transformation, climate adaptation, and intersectional vulnerabilities including disability and youth dimensions would

deepen the understanding of gender-responsive resilience. Overall, this study highlights that empowering women in disaster management is not only a matter of equity but also a strategic pathway toward achieving inclusive, adaptive, and sustainable national resilience.

## REFERENCES

- Achmad, Z. A., Nuryananda, P. F., Haq, J. A., Budiwitjaksono, G. S., & Agustina, Z. N. (2024). The Importance of Gender-Based Standard Operating Procedures for Disaster Management in East Java. *Jurnal Sosial Humaniora (JSH)*, 17(1), 1–16.
- Agustina, I. H., Ekasari, A. M., Aji, R. R., & Rachmiatie, A. (2021). Disaster Resilient Women's Forum's Strategic Plan for Local Mitigation Community. *MIMBAR: Jurnal Sosial Dan Pembangunan*, 37(2), 454–463. <https://doi.org/10.29313/mimbar.v37i2.8457>
- Badan Nasional Penanggulangan Bencana (BNPB). (2014). *Peraturan Kepala Badan Nasional Penanggulangan Bencana Nomor 13 Tahun 2014 tentang Pengarusutamaan Gender dalam Penanggulangan Bencana*. <https://bnpb.go.id>
- Frege, I. A., Befus, E., Ben Bih, K., Fawwad, M., Ide, T., Kiefer, M., Kienzl, P., Kluppel, D., Korte, L., Kortendieck, M., Moloinyane, S., Peters, K., Radtke, K., Scheider, S., & Weller, D. (2024). *World Risk Report 2024 Focus: Multiple Crises*. [https://securesustain.org/wp-content/uploads/2024/10/WorldRiskReport\\_2024.pdf?utm](https://securesustain.org/wp-content/uploads/2024/10/WorldRiskReport_2024.pdf?utm)
- Hafida, S. H. N. (2019). Pemberdayaan Perempuan sebagai Bentuk Penguatan Strategi Pengarusutamaan Gender dalam Situasi Bencana di Kabupaten Klaten. *Jurnal Solma*, 8(1), 63–72. <https://doi.org/10.29405/solma.v8i1.3058>
- Hastuti, H. (2017). Peran Perempuan dalam Menghadapi Bencana di Indonesia. *Geomedia: Majalah Ilmiah Dan Informasi Kegeografian*, 14(2). <https://doi.org/10.21831/gm.v14i2.13812>
- Mulyadi, T., & Yanuarto, T. (2022). *Partisipasi dan Kepemimpinan Perempuan Lokal dalam Penanggulangan Bencana*. <https://www.bnpb.go.id/berita/partisipasi-dan-kepemimpinan-perempuan-lokal-dalam-penanggulangan-bencana>
- Mulyasari, F., & Shaw, R. (2013). Role of Women as Risk Communicators to Enhance Disaster Resilience of Bandung, Indonesia. *Natural Hazards*, 69(3), 2137–2160. <https://doi.org/10.1007/s11069-013-0786-8>
- Ramailis, N., & Sakir, S. (2024a). Gender Mainstreaming in Natural Disaster Management: Study of Planning for Strengthening Women's Capacity Against Disasters in Bantul District. *Amalee: Indonesian Journal of Community Research and Engagement*, 5(1), 155–170. <https://doi.org/10.37680/amalee.v5i1.3892>
- Ramailis, N., & Sakir, S. (2024b). Increasing Women's Resilience to Disasters: An Analysis of Gender Mainstreaming in Natural Disaster Management in Bantul, Indonesia. *JISPO Jurnal Ilmu Sosial Dan Ilmu Politik*, 13(2), 307–322. <https://doi.org/10.15575/jispo.v13i2.29003>
- Republic of Indonesia. (2007). *Undang-Undang No. 24 Tahun 2007 tentang Penanggulangan Bencana*. <https://peraturan.bpk.go.id/Details/39901/uu-no-24-tahun-2007>

- Rijal, S., Nursaputra, M., Chairil, A., & Dari, H. U. (2024). Flood Susceptibility Analysis Using Frequency Ratio Method in Walanae Watershed. *International Journal of Sustainable Development & Planning*, 19(3), 823–832. <https://doi.org/10.18280/ijstdp.190302>
- Roy, D., & Mukherjee, M. (2024). Challenges and Opportunities for Women in Disaster Risk Management. *IDRiM Journal*, 14(2), 228–240. <https://doi.org/10.5595/idrim.2024.0197>
- Ruslanjari, D., Putri, R. A. P., Puspitasari, D., & Sulistiyo, S. (2024). Embracing Leadership of Local Actors and Community in Disaster Risk Reduction of Yogyakarta. *Jambá: Journal of Disaster Risk Studies*, 16(1), 1–9. <https://doi.org/10.4102/jamba.v16i1.1550>
- Ruslanjari, D., Wahyunita, D. I., & Permana, R. S. (2017). Peran gender pada siklus manajemen bencana di sektor sosial ekonomi rumah tangga tani (bencana alam gempabumi dan letusan gunungapi). *Jurnal Kawistara*, 7(1), 78–93. <https://doi.org/10.22146/kawistara.24249>
- Sakir, S. (2023). Increasing women's resilience to disasters: An analysis of gender mainstreaming in natural disaster management in Bantul, Indonesia. *JISPO Jurnal Ilmu Sosial Dan Ilmu Politik*, 13(2), 307–322. <https://doi.org/10.15575/jispo.v13i2.23904>
- Sumarni, L., Rudiatin, E., Dahlan, J. K. A., Cirendeu, C., & Timur, C. (2020). Women's Role in Mitigation and Disaster Management. *BASKARA: Journal of Business & Entrepreneurship*, 3(1), 1–12. <https://doi.org/10.24853/BASKARA.3.1.1-12>
- Susanti, E. (2022). Peran Perempuan Pesisir terhadap Ketahanan Keluarga Pasca Bencana Alam Gempa Bumi di Desa Maliaya, Kabupaten Majene Tahun 2021. *Jurnal Ketahanan Nasional*, 27(3), 417–436. <https://doi.org/10.22146/jkn.70466>
- Talaththof, I. Z., & Zunariyah, S. (2021). Women Agency in Community-based Disaster Preparedness. *Journal of Development and Social Change*, 4(2), 104–124.
- United Nations Office for Disaster Risk Reduction (UNISDR). (2015). *Sendai Framework for Disaster Risk Reduction 2015–2030*. <https://www.undrr.org/publication/sendai-framework-disaster-risk-reduction-2015-2030>
- Yumarni, T., & Amaratunga, D. (2017). Resource Capability for Local Government in Mainstreaming Gender into Disaster Risk Reduction: Evidence from Bantul, Indonesia. *Journal of Regional and City Planning*, 28(3), 178–185. <https://doi.org/10.5614/jrcp.2017.28.3.2>
- Yuniartanti, R. K., Suroso, D. S. A., Rahayu, H. P., & Sagala, S. A. (2025). Reformulation disaster risk index assessment in Palu City, Indonesia. *Jambá: Journal of Disaster Risk Studies*, 17(1), 1–12. <https://doi.org/10.4102/jamba.v17i1.1725>
- Yuwanto, L. (2023). Faktor Penghambat Perempuan Penyandang Disabilitas dalam Partisipasi Pengurangan Risiko Bencana: Studi Kasus Penyintas Bencana Gempa Lombok. *Ad-Dariyah: Jurnal Dialektika, Sosial Dan Budaya*, 3(2), 16–32. <https://doi.org/10.55623/ad.v3i2.131>